



Burwood Heights Primary School's goal is to educate the whole child.  
Our students are at the heart of everything we do.

MONDAY	4 <sup>TH</sup> MARCH	KINDERGARTEN BARBEQUE
FRIDAY	8 <sup>TH</sup> MARCH	HOUSE SPORTS
MONDAY	11 <sup>TH</sup> MARCH	LABOUR DAY HOLIDAY
WEDNESDAY	13 <sup>TH</sup> TO 25 <sup>TH</sup> MARCH	NAPLAN – YEARS THREE AND FIVE
MONDAY	18 <sup>TH</sup> MARCH	SCHOOL COUNCIL
MONDAY	25 <sup>TH</sup> MARCH	HOUSE CROSS COUNTRY
WEDNESDAY	27 <sup>TH</sup> MARCH	SCHOOL PHOTOS
THURSDAY	28 <sup>TH</sup> MARCH	CURRICULUM DAY
FRIDAY	29 <sup>TH</sup> MARCH	GOOD FRIDAY – COMMENCEMENT OF TERM ONE HOLIDAY BREAK
MONDAY	15 <sup>TH</sup> APRIL	TERM TWO COMMENCES
THURSDAY	25 <sup>TH</sup> APRIL	ANZAC DAY – PUBLIC HOLIDAY
TUESDAY	30 <sup>TH</sup> APRIL	DISTRICT CROSS COUNTRY

## FROM THE PRINCIPAL

### REMINDER LABOUR DAY - PUBLIC HOLIDAY EXPLAINED



On Monday 11<sup>th</sup> March 2024, it is a public holiday, to acknowledge Labour Day. Labour Day in Australia celebrates workers' roles in contributing to the nation's economy. It is an annual public holiday. It commemorates the granting of the eight-hour working day for Australians.

The history of Labour Day spans over a century. It remembers those who struggled and succeeded to ensure decent and fair working conditions applied in Australia. During the mid to late 1800s the working day was long and arduous, where some employees would work up to twelve hours a day, six days a week. Many Australians saw the need for better working conditions and in the 1850s there was a strong push for this.

On April 21, 1856, the stonemasons at the University of Melbourne marched to Parliament to push for an eight-hour working week. An agreement with employees for a forty-eight-hour week was eventually reached and Australians welcomed the eight-hour day.



Phone: 9803 8311

Website: [www.burwoodhps.vic.edu.au](http://www.burwoodhps.vic.edu.au)

Email: [burwood.heights.ps@education.vic.gov.au](mailto:burwood.heights.ps@education.vic.gov.au)

### **HOUSE ATHLETICS**

**CHANGE OF DATE** – Unfortunately the House Athletics was unable to go ahead on Wednesday 28<sup>th</sup> February due to the expected high temperature. The House Athletics will now take place on Friday 8<sup>th</sup> March.

**THERE WILL NOT BE AN ASSEMBLY ON 8<sup>TH</sup> MARCH**



### **REMINDER**

We have students in our school who have a severe allergy to nuts and nut products. If exposed to nuts these students can have an anaphylactic reaction and, within a very short time span, experience extreme difficulties with their respiratory and/or cardiovascular systems. Potentially this is life-threatening.

The key to prevention of anaphylaxis in schools is knowledge, awareness and planning. As part of our Risk Management to ensure the safety of these students, **I ask families not to bring nuts or nut products to the school site or to school activities. If your child is at risk of having an anaphylactic reaction, please educate him/her about not accepting food from others.**

Anaphylaxis is not rare. The Australian statistics show one in one hundred and sixty-six children have had at least one episode of anaphylaxis in the past, with one in six episodes of anaphylaxis having occurred in school or childcare. Safe schooling is often a big worry for parents however with education and co-operation between school, parents and doctors, school can be a safer place for those with anaphylaxis.

Your cooperation with this requirement is appreciated. The classroom teachers will provide you with additional information from time to time, and in particular inform you of protocols to follow around bringing any special foods to school for Special Days or Events.

### **THE IMPORTANCE OF FULL TIME ATTENDANCE**

Schooling is compulsory for children and young people aged from 6 to 17 years unless an exemption from attendance or enrolment has been granted. Parents are required to ensure their child attends school every day and to provide an explanation for their child's absence from school when this does not occur.

Parents should promptly inform the school of the reason for their child's absence. If absences are "unexplained" by the parent, the school is required to notify you for a reason.

### ***EARLY NOTIFICATION - SCHOOL PHOTOS – WEDNESDAY 27<sup>TH</sup> MARCH 2024***



The impulse for all of us to save our recorded memories is a powerful force which is why school photos have been treasured since schools began. School photos are a record of time and place, of friendships, a record of a child's growth and a wonderful way for parents to share their loved one with the wider family circle.

Please make sure your child is in the correct school uniform and, if hair is long, please tie it back with a dark blue or black ribbon or band. Remember to wear black shoes and the correct colour and length socks.

### ***NAPLAN***



The National Assessment Programme – Literacy and Numeracy is an annual assessment for students in Years Three, Five, Seven and Nine. It has been administered since 2008, albeit under different names.

Whilst the Victorian Curriculum and Assessment Authority (VCAA) is responsible for NAPLAN in Victoria, the NAPLAN tests are a national assessment programme run by the Australian Curriculum, Assessment and Reporting Authority (ACARA).

NAPLAN is made up of tests in the four domains of Reading, Writing, Language Conventions (Spelling, Grammar and Punctuation) and Numeracy. The tests show how students are progressing in Numeracy and Literacy against national standards for all Australian students. It does not replace school-based ongoing assessments made by teachers about student performance. The benchmarks describe minimum acceptable standards for students across Australia,

ACARA does not recommend excessive preparation for NAPLAN or the use of services by coaching providers. Individual student performance is shown on a national achievement scale for each assessment.

Assessments commence on Wednesday 13<sup>th</sup> March and will be conducted over the next eight days.

An individual student NAPLAN report will be issued by the school later this year.



## *CAMPS, SPORTS, AND EXCURSION FUND (CSEF)*



The Camps, Sports, and Excursions Fund (CSEF) provides payments for eligible students to attend activities like school camps or trips, swimming and school-organized sport programs, outdoor education programs and excursions and incursions.

Payments for 2024 are \$125.00 for eligible primary school students and \$225.00 for eligible secondary school students. The payment is made directly to the school.

Families holding a valid means-tested concession card such as:

- Veterans Affairs Gold Card
- Centrelink Health Card
- Pensioners Concession Card

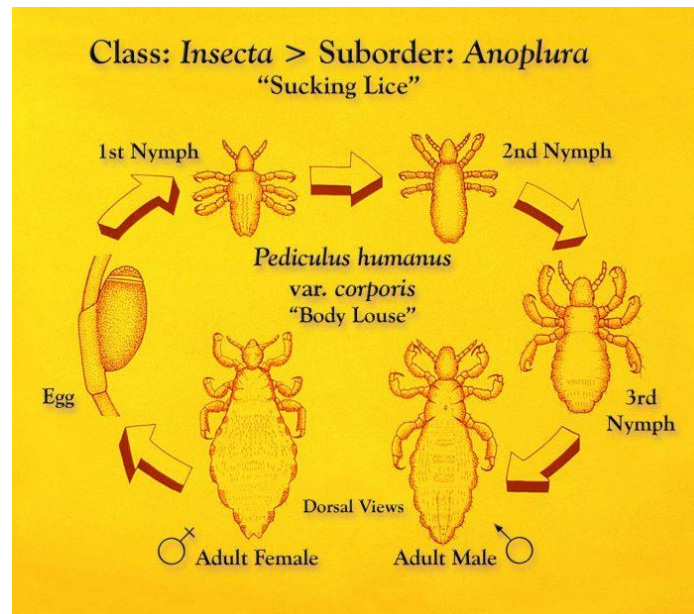
Families can list more than one student in the one application form if they are attending the same school. A special consideration category exists for:

- families on a bridging visa, temporary protection visa, are in community detention or are asylum seeker families – a letter from Australian Red Cross or similar welfare institution, visa grant notice or ImmiCards is required as evidence.
- students in temporary out of home care arrangements, including statutory kinship care – a letter of support from the institution facilitating the arrangement (for example Mackillop Family Services) or the Department of Families, Fairness and Housing is required as evidence. Copies of court orders are not required.

Applications for special consideration can be made through the standard application form and must be submitted by **28<sup>th</sup> June 2024**.

- from March onwards each year where the parent/carer's concession card is assessed as valid on the first day of Term One; and
- until June 28<sup>th</sup> when the parent/carer's concession card is assessed as valid at the end of Term Two.
- Year Seven and Prep students in government schools who receive funds are also able to get support for school uniforms. For more information regarding this initiative, see [State Schools' Relief](#). Applications can be entered from 29<sup>th</sup> January 2024. Parents/carers wishing to apply for CSEF payments for 2024 must submit their application form to the relevant school by 28<sup>th</sup> June 2024. Please refer to the link attached for application form.

## HEAD LICE



Head lice are a common problem that usually affects school-aged children and their families. They can attach to the hair of anyone's head. It doesn't matter if the hair is clean or dirty. Head lice are also found worldwide in all different places, such as in homes or schools or the country or city. And it doesn't matter how clean, dirty, rich, or poor the place or person is.

### WHAT ARE HEAD LICE?

Head lice are tiny bugs about the size of a sesame seed (2–3 millimetres - mm) long. Their bodies are usually pale and grey, but their colour may vary. One of these tiny bugs is called a louse. Head lice feed on small amounts of blood from the scalp. They can usually live one to two days without blood meal.

Lice lay and attach their eggs to hair close to the scalp. The eggs and their shell casings are called nits. They are oval and about the size of a knot in thread (0.8 mm long and 0.3 mm wide) and usually yellow to white. Some nits may blend in with some people's hair colour, making them hard to see, and are often confused for dandruff or hair spray droplets. Nits attach to the hair with a sticky substance that holds them firmly in place. After the eggs hatch, the empty nits stay on the hair shaft.

### WHAT IS THE LIFE CYCLE OF HEAD LICE?

Head lice live about **twenty-eight** days. They develop in **three** phases: egg (also called a nit), nymph, and adult louse.

- **Egg or nit.** Eggs or nits hatch in **six to nine** days. Eggs are usually found within four to six mm of the scalp and do not survive if they are farther away.
- **Nymph.** The nymph looks like an adult head louse but is much smaller (about the size of a pinhead [1.5 mm]). Nymphs become adults about seven days after hatching.
- **Adult louse.** An adult louse can multiply fast and lay up to **ten** eggs a day. It takes only about **twelve to fourteen days** for newly hatched eggs to reach adulthood.

**This cycle can repeat itself every three weeks if head lice are left untreated.**



## Update from Little Lambs Kindergarten in Sri Lanka:

**Thank you** to all our generous friends who have donated items and financial support over the past year to help this Kindergarten.

The Kindergarten recently celebrated 39 years of educating children. This is a wonderful celebration and milestone.

Over the past months, we have collected stationery, paper items, folders, library bags and with your financial donations, we have purchased educational materials and sent **twelve big boxes** over the past 6 months.

With your financial giving, staff have **purchased three large lockable cupboards** to enable them to store the items we have shipped to them.

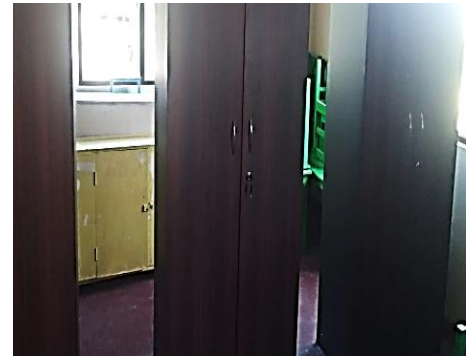
The staff were amazed with the support and items given to them and have asked us to pass on their sincere and deep thanks!

Throughout 2024 we will continue to support them and will be sending over items for their program and assisting them financially. If you would like to continue to support this, we would appreciate your donations of:

- ✓ Children puzzles, games, books, or educational equipment for children aged 3-6years old.
- ✓ Financial support - assisting us to purchase items required AND to cover shipping and duty charges.
- ✓ Items that could be used to make handmade paper cards.
- ✓ Material used for sewing. Jenny plans to make children's dress ups and aprons for their use.

Jenny will also be making homemade cards, sewing baby face washers, and named bath towels if you wish to purchase these items. When it is closer to Christmas, Jenny will be selling more products (cards, tea towels and hand towels and some surprise items) to support this kindergarten. Please be on the lookout for these or feel free to contact Jenny with any questions.

Again, we thank you for your generous support and for helping to have a huge impact in the lives of the children and staff who are blessed by your donations.  
Jenny de Kretser, 3-year-old Kindergarten Teacher.



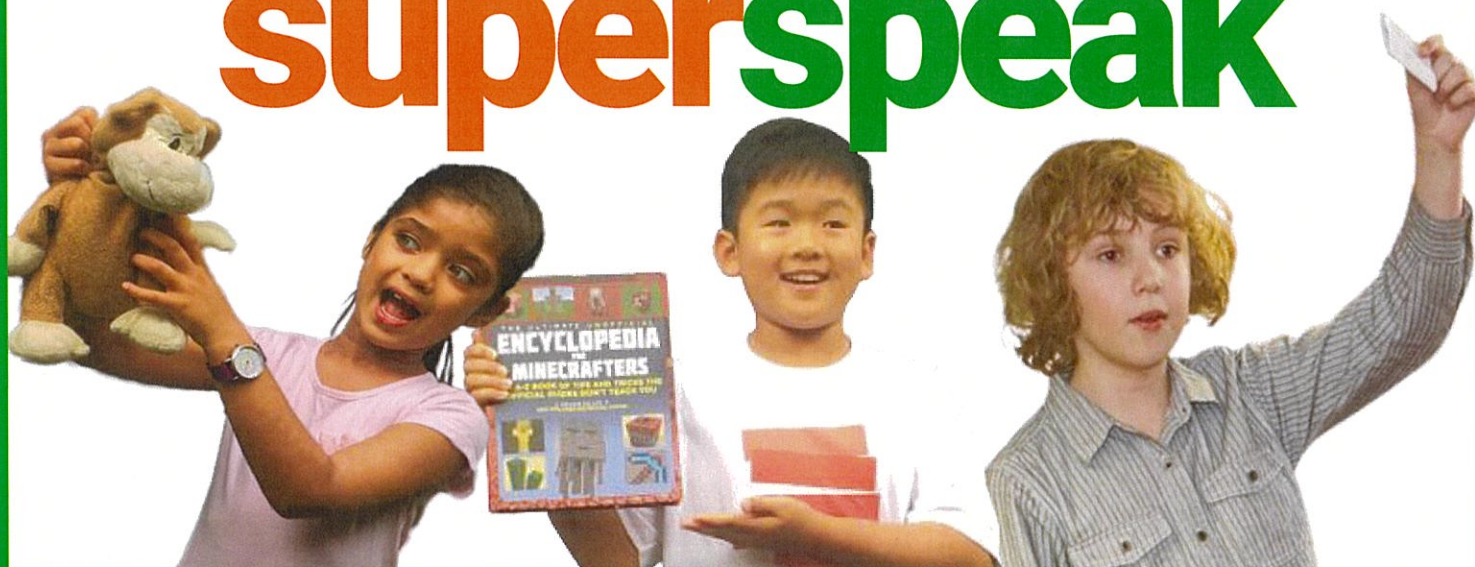


Confidence

Communication Skills

Creativity

# superspeak



Weekly public speaking, drama & presentation skills for ages 6-14

17 Venues Across  
**Melbourne**

★ Leading Curriculum  
★ Experienced Teachers  
★ Loads of FUN!

**communication**

★ quick thinking  
★ **expression**  
★ teamwork  
★ **confidence**  
★ leadership  
★ **persuasion**  
★ vocal variety

Award  
Winning  
Program  
Trusted Since  
2006

**ENROL NOW**

Glen Waverley,  
Balwyn North,  
Point Cook, Epping,  
Chadstone, Burwood,  
Essendon, Doncaster,  
Canterbury, Rowville,  
Ashburton, Ivanhoe,  
Caroline Springs,  
Truganina &  
Altona Meadows

**9572 5249**

[info@SuperSpeak.com.au](mailto:info@SuperSpeak.com.au)  
[www.SuperSpeak.com.au](http://www.SuperSpeak.com.au)